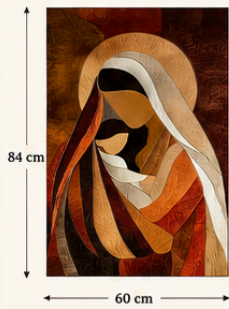


MADONNA & CHILD – QUILT ART TUTORIAL

From Fabric to Faith: Step-by-Step Quilt Art

1. FINISHED SIZE



Finished Size: 60 cm (W) x 84 cm (H)
Seam Allowance: 0.7 cm

2. FABRIC & COLOR GUIDE

	A	Light Beige	30 x 30 cm
	B	Cream	30 x 30 cm
	C	Golden Tan	30 x 30 cm
	D	Orange Rust	30 x 30 cm
	E	Deep Rust	30 x 30 cm
	F	Burgundy	30 x 30 cm
	G	Dark Brown	30 x 30 cm
	H	Black	30 x 30 cm
	I	Medium Brown	30 x 30 cm
	J	Background 1	35 x 45 cm
	K	Background 2	35 x 45 cm
	L	Batting	65 x 89 cm
	M	Backing Fabric	65 x 89 cm

3. PATTERN OVERVIEW (All pieces include 0.7 cm seam allowance)



Trace or print this pattern on paper at 100%.
You can enlarge or reduce it, but adjust the measurements proportionally.
All pieces are numbered by letters (A-K).



4. CUTTING GUIDE

Cut all pieces using the pattern above.

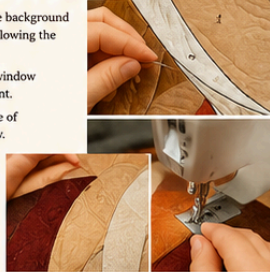
Tips:

- Use a sharp rotary cutter.
- Cut on a rotary mat.
- Add 0.7 cm seam allowance around each piece.
- Label each piece by letter.



5. APPLIQUÉ THE PIECES

- Place pieces on the background fabric (J and K) following the pattern.
- Use a lightbox or window for easier placement.
- Appliqué using one of the methods below.
- Press gently after securing.



6. APPLIQUÉ METHODS (Choose One)

A. Raw Edge Appliqué (Zigzag Stitch)



Use a small zigzag stitch (2.0 mm width, 1.5 mm length) around the edge.

B. Blanket Stitch (Hand or Machine)



Use blanket stitch by hand or machine for a decorative outline.

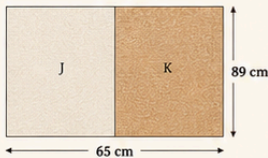
C. Invisible Turn Appliqué



Turn under the edge 0.7 cm and hand stitch with an invisible stitch.

7. ASSEMBLE THE BACKGROUND

- Sew background pieces (J and K) together as shown.
- Press seams open.
- Trim to 65 cm (W) x 89 cm (H).



8. QUILT SANDWICH

Layer the quilt as follows:

1. Backing fabric (M) – wrong side up
 2. Batting (L)
 3. Appliquéd top – right side up
- Baste layers together using safety pins or basting spray.



9. QUILTING

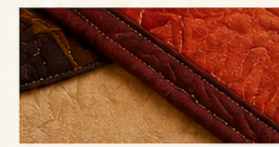
Quilting Ideas:

- Echo quilting around the halo and figures.
- Free-motion quilting in the background for texture.
- Use matching thread colors.
- Quilt all layers together.



10. BINDING

- Cut binding strips 6.5 cm wide.
- Sew strips together end to end.
- Fold in half lengthwise and press.
- Sew binding to the front, miter corners.
- Fold to the back and hand stitch.



11. THE FINISHED QUILT

Your quilt is complete!
Enjoy your beautiful Madonna & Child quilt artwork.



LEGEND: MAIN SEWING & QUILTING METHODS (USA QUILT STYLE)

Straight Stitch	Zigzag Stitch	Appliqué Stitch (Raw Edge)	Blanket Stitch (Hand)	Invisible Stitch	Echo Quilting	Free-motion Quilting	Mitered Corner (Binding)
Used for piecing fabric together with a sewing machine.	Used to finish raw edges in appliqué. Width: 2.0 mm Length: 1.5 mm	Small zigzag stitch around the edge to secure the appliqué.	Decorative stitch to finish the edge by hand.	Used to appliqué turned under edges invisibly.	Quilt around shapes to highlight the design.	Move the fabric freely to create texture and patterns.	Fold binding at 45° for neat corners.



TIPS FOR SUCCESS

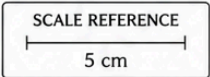
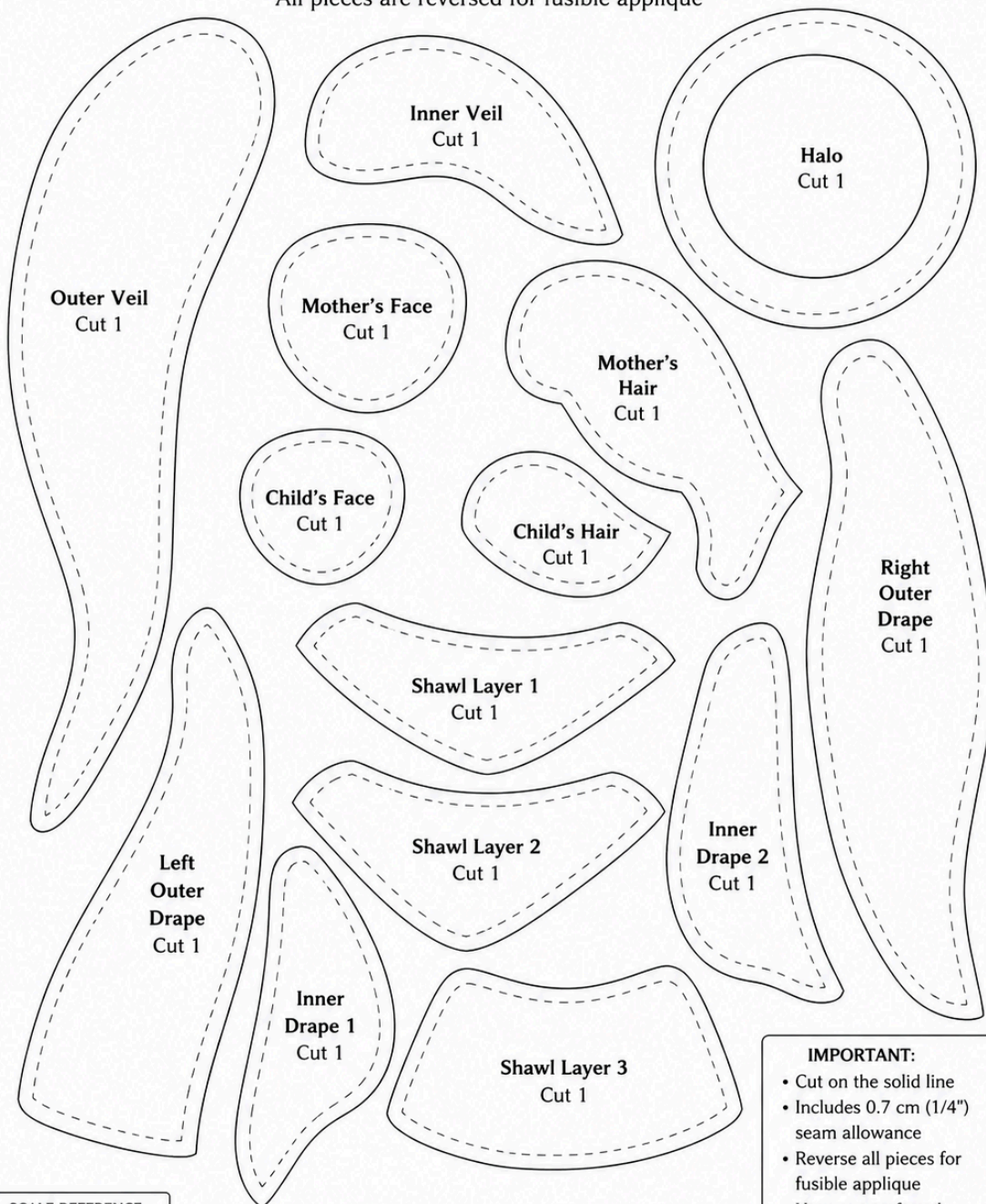
- Use high-quality 100% cotton fabrics.
- Take your time with placement.
- Press often.
- Enjoy the process and have fun!



Quilted Mother and Child – Sewing Pattern

Includes seam allowance • 0.7 cm (1/4") all around

All pieces are reversed for fusible applique



IMPORTANT:

- Cut on the solid line
- Includes 0.7 cm (1/4") seam allowance
- Reverse all pieces for fusible applique
- Use your preferred fabric colors

Madonna & Child Quilt Art Tutorial

Madonna & Child Quilt Art is a fabric appliqué wall quilt measuring **60 cm wide x 84 cm high**. Seam allowance: **0.7 cm**.

This tutorial follows the chart step by step so you can recreate the quilt from start to finish using USA-style quilting methods.

1. Finished Size and Supplies

Finished quilt size:

Width: 60 cm

Height: 84 cm

Seam allowance: 0.7 cm

You will need:

100% cotton fabrics, batting, backing fabric, rotary cutter, cutting mat, fabric scissors, pins or clips, thread, sewing machine, iron, lightbox or window, paper pattern, and binding fabric.

2. Fabric and Color Guide

Cut fabrics according to the pattern letters:

A – Light Beige: 30 x 30 cm

B – Cream: 30 x 30 cm

C – Golden Tan: 30 x 30 cm

D – Orange Rust: 30 x 30 cm

E – Deep Rust: 30 x 30 cm

F – Burgundy: 30 x 30 cm

G – Dark Brown: 30 x 30 cm

H – Black: 30 x 30 cm

I – Medium Brown: 30 x 30 cm

J – Background 1: 35 x 45 cm

K – Background 2: 35 x 45 cm

L – Batting: 65 x 89 cm

M – Backing Fabric: 65 x 89 cm

Choose warm earthy tones like beige, cream, rust, brown, burgundy, and black to keep the sacred quilt art look faithful to the design.

<https://creative.craftsforlove.com/> - **SEE THE BEST PATTERNS**

3. Prepare the Pattern

Print or trace the pattern at **100% size**.

All pieces are labeled by letters **A to K**.

The design already includes a **0.7 cm seam allowance**, so keep the pieces accurate when tracing and cutting.

If you enlarge or reduce the pattern, adjust all measurements proportionally.

4. Cutting the Fabric Pieces

Place each paper pattern piece on the correct fabric color.

Cut carefully using a sharp rotary cutter or fabric scissors.

Label every fabric piece with its letter so you do not confuse the shapes during appliqué.

Keep the curved pieces organized, especially the halo, veil, face, hands, robe, and background sections.

5. Assemble the Background

Sew background pieces **J** and **K** together as shown in the chart.

Press the seam open or to one side.

Trim the background to:

65 cm wide x 89 cm high

This larger background allows room for quilting, trimming, and finishing.

6. Position the Appliqué Pieces

Lay the background fabric flat.

Place all appliqué pieces on top following the pattern.

Use a lightbox or a bright window to help position the pieces accurately.

Start with the larger shapes first, such as the robe, veil, halo, and body areas.

Then place smaller details like the face, hands, and dark shadow pieces.

Pin, glue-baste, or lightly tack the pieces in place before stitching.

<https://creative.craftsforlove.com/> - **SEE THE BEST PATTERNS**

7. Choose Your Appliqué Method

You may choose one of these methods:

Raw Edge Appliqué

Place the fabric pieces directly on the background.

Use a small zigzag stitch around each edge.

Recommended stitch size:

2.0 mm width

1.5 mm length

This method is faster and works well for decorative quilt art.

Blanket Stitch Appliqué

Use a blanket stitch by hand or machine around each appliqué piece.

This creates a decorative handmade look.

It is ideal for the robe, veil, halo, and large curved areas.

Invisible Turn Appliqué

Turn the fabric edge under by **0.7 cm**.

Hand stitch the edge using nearly invisible stitches.

This method gives the cleanest traditional finish but takes more time.

8. Stitch the Appliqué Pieces

Begin stitching from the bottom layers and work upward.

Secure larger robe and background shapes first.

Then stitch the veil, halo, face, hands, and smaller details.

Use matching thread colors when possible.

Press gently after stitching each area, but do not stretch the fabric.

Take your time with the curves to keep the artwork smooth and elegant.

9. Make the Quilt Sandwich

Layer the quilt in this order:

1. **Backing fabric M** — wrong side facing up
2. **Batting L**
3. **Appliquéd quilt top** — right side facing up

Smooth all layers carefully.

Baste with safety pins, thread basting, or basting spray.

Make sure there are no wrinkles before quilting.

10. Quilting the Design

Quilt around the halo and the main figure using **echo quilting**.

This means stitching around the shapes to highlight the design.

For the background, use free-motion quilting to add texture.

You can quilt soft curves, waves, or decorative patterns.

Use thread colors that match or gently blend with the fabric.

Quilt through all layers until the full piece is secure.

11. Binding the Quilt

Cut binding strips **6.5 cm wide**.

Sew the strips together end to end.

Fold the binding in half lengthwise and press.

Sew the binding to the front of the quilt.

Miter the corners at **45°** for a neat finish.

Fold the binding to the back and hand stitch it in place.

12. Final Trimming and Finishing

Trim the quilt evenly to the final size:

60 cm wide x 84 cm high

Check the edges, corners, appliqué stitches, and quilting lines.

Press the quilt gently from the back.

Add a hanging sleeve if you want to display it as wall art.

Your **Madonna & Child Quilt Art** is complete ✨

Tips for Success

Use high-quality **100% cotton fabrics**.

Press often, but gently.

Keep all pieces labeled.

Do not rush the appliqué placement.

Use matching thread for a clean result.

Enjoy the process and treat the quilt as fabric artwork.

<https://creative.craftsforlove.com/> - **SEE THE BEST PATTERNS**