

<https://creative.craftsforlove.com/> - **SEE THE BEST PATTERNS**

Stained Glass Cross Quilt Tutorial ✨

Create a beautiful **Stained Glass Cross Quilt** using the **Foundation Paper Piecing (FPP)** method. This quilt is designed to look like colorful stained glass, with bright fabric pieces separated by bold black lines. The finished size is approximately **63 cm wide x 88 cm high**, or about **25 inches wide x 35 inches high**.

This project is suitable for a **confident beginner to intermediate quilter** and takes around **12–16 hours** to complete.

<https://creative.craftsforlove.com/> - **SEE THE BEST PATTERNS**

STAINED GLASS CROSS QUILT TUTORIAL

A STEP-BY-STEP GUIDE TO CREATE A VIBRANT STAINED GLASS CROSS QUILT



FINISHED SIZE
63 cm (W) x 88 cm (H)

SKILL LEVEL
☆☆☆☆☆
Confident Beginner to Intermediate

PROJECT TIME
12-16 Hours

This quilt uses the foundation paper piecing method to achieve precise, stained-glass effect with sharp angles.

1. MATERIALS & TOOLS

FABRIC (100% QUILTING COTTON)

- 18-22 different colors for the stained glass pieces
- Black fabric (for background, border and binding)
- Backing fabric: 100 cm x 125 cm
- Batting: 100 cm x 125 cm

TOOLS

- Sewing machine
- Rotary cutter & mat
- Acrylic ruler
- Fabric scissors
- Pins or clips
- Iron & ironing board
- Pencil
- Glue stick
- Paper for foundation (standard printer paper)



2. MAIN METHODS USED

Foundation Paper Piecing (FPP)



Sew fabric pieces directly on paper templates.



Accurate 1/4" Seam
Use 1/4" (0.7 cm) seam allowance throughout.



Pressing
Press seams open or to the side.



Trimming
Trim blocks to the correct size.



Basting
Secure quilt layers together.



Quilting
Stitch the layers permanently.



Binding
Finish edges for a clean look.

3. PATTERN & CONSTRUCTION STEPS

1 PREPARE PATTERN



Print the full-size pattern (actual size).

Cross size: 63 cm (W) x 88 cm (H)

The pattern is divided into many numbered sections.

2 CUT FABRICS



Select fabrics for each section based on the color.

Cut fabric pieces at least 2.5 cm larger than each paper section.

Tip: Use a variety of values for a stained glass effect.

3 SEW ON PAPER (FPP)



Place fabric right side up on the back of the paper. Sew along the lines. Flip fabric over and press.

Add the next piece overlapping the previous seam. Continue until the section is complete.

4 COMPLETE ALL SECTIONS



Repeat the process for all numbered sections. Each section represents a stained glass piece.

5 REMOVE PAPER



Tear or trim away the paper from the back of each section. Be careful not to stretch the seams.

6 ASSEMBLE ROWS



Arrange the sections as shown on the diagram. Sew sections together carefully.

7 JOIN ROWS



Sew the rows together to complete the cross. Press seams flat.

8 ADD BLACK BACKGROUND



Cut black fabric panels. Add a border around the cross. Recommended border width: 6 cm all sides.

9 PREPARE QUILT SANDWICH



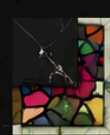
Layer:
• Backing (wrong side up)
• Batting
• Top (right side up)
Baste all layers together.

10 QUILT



Quilt along the black seams (stitch in the ditch) or add echo quilting 1-2 cm inside the black lines.

11 TRIM



Trim excess backing and basting even with the top.

12 BINDING



Cut binding strips: 6.5 cm wide → x width of fabric. Fold in half, press. Sew binding around the quilt.

13 FINAL PRESS



Press the quilt gently to set the stitches and give a flat, beautiful finish.

14 ENJOY!



Your Stained Glass Cross Quilt is complete! Enjoy your handmade masterpiece!

MEASUREMENTS SUMMARY (CM)

- Finished quilt: 63 cm x 88 cm
- Border: 6 cm all sides
- Backing fabric: 100 cm x 125 cm
- Batting: 100 cm x 125 cm
- Binding strips: 6.5 cm wide
- Seam allowance: 0.7 cm (1/4")

TIPS FOR SUCCESS

- Use high-contrast fabrics for a true stained glass look.
- Take your time with accurate seam allowance.
- Press gently to avoid stretching.
- Keep your work organized by numbering sections.
- Enjoy the creative process!

PATTERN LAYOUT (EXAMPLE)



EXAMPLE COLOR PLACEMENT

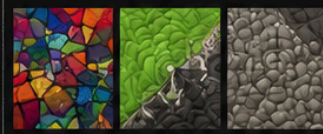


Use this as inspiration. Feel free to create your own color combination!

FABRIC PLACEMENT GUIDE

Bright Blue	Bright Blue
Dark Blue	Dark Blue
Red	Red
Orange	Orange
Yellow	Yellow
Green	Purple
Purple	Pink
Pink	Turquoise
Turquoise	Lime Green
Lime Green	Magenta
Magenta	Gold
Gold	Etc...

QUILTING IDEAS



Stitch in the ditch Echo quilting Pebble quilting

THANK YOU FOR MAKING THIS QUILT! ♥ KEEP CREATING, KEEP QUILTING!

STAINED GLASS CROSS QUILT PATTERN

For personal use only.
Add 0.7 cm seam allowance
around the entire shape.

LEGEND

- Cutting Line
- - - Seam Allowance
(0.7 cm)

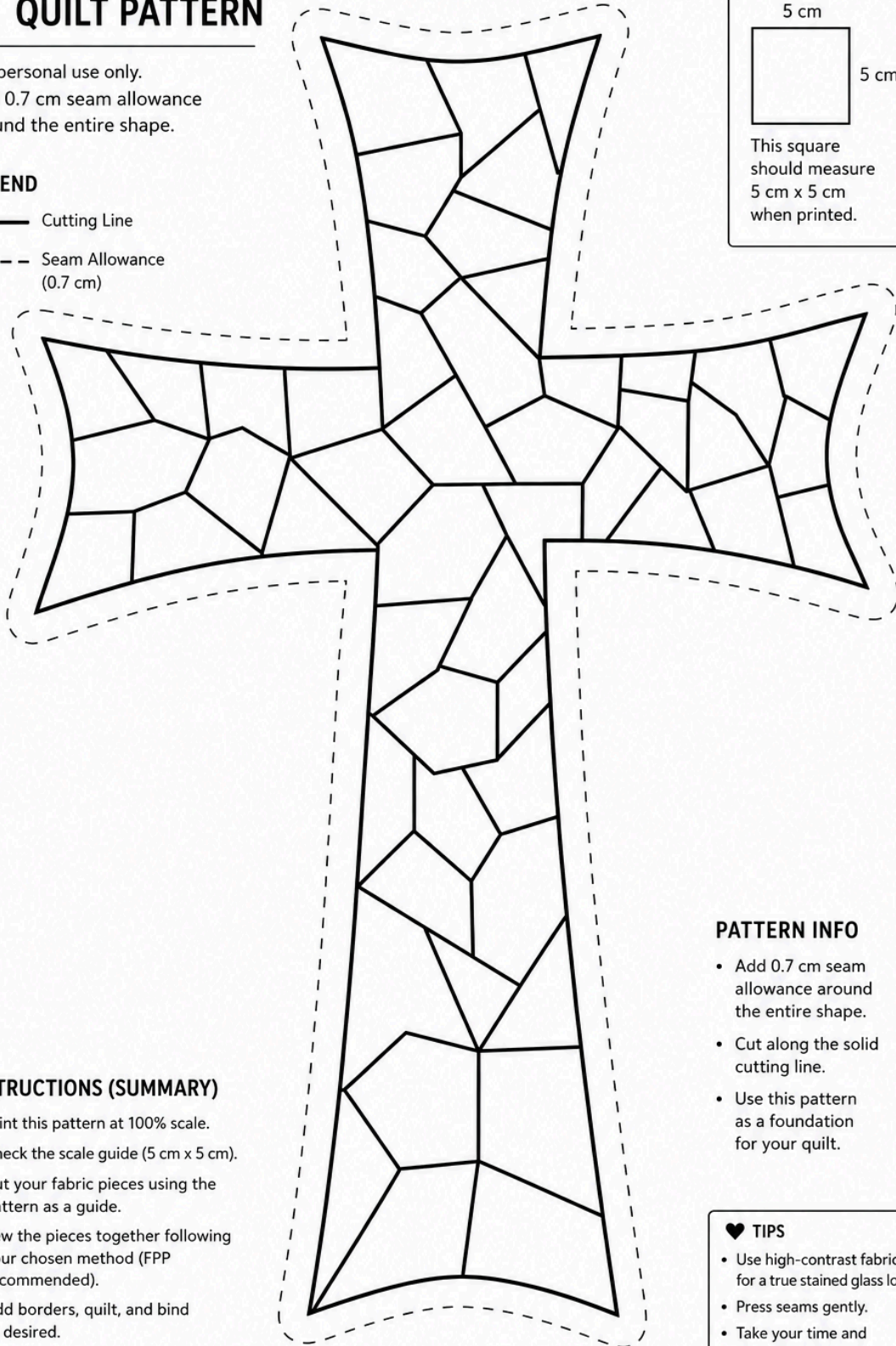
SCALE GUIDE

5 cm



5 cm

This square
should measure
5 cm x 5 cm
when printed.



INSTRUCTIONS (SUMMARY)

1. Print this pattern at 100% scale.
2. Check the scale guide (5 cm x 5 cm).
3. Cut your fabric pieces using the pattern as a guide.
4. Sew the pieces together following your chosen method (FPP recommended).
5. Add borders, quilt, and bind as desired.

PATTERN INFO

- Add 0.7 cm seam allowance around the entire shape.
- Cut along the solid cutting line.
- Use this pattern as a foundation for your quilt.

♥ TIPS

- Use high-contrast fabrics for a true stained glass look.
- Press seams gently.
- Take your time and enjoy the process!

HAVE FUN CREATING YOUR MASTERPIECE! ♥

<https://creative.craftsforlove.com/> - **SEE THE BEST PATTERNS**

Materials and Tools

You will need **18–22 different colorful quilting cotton fabrics** for the stained glass pieces. Choose bright colors such as red, orange, yellow, green, blue, purple, pink, turquoise, lime, and magenta.

You will also need **black quilting cotton** for the background, borders, and binding. The black fabric creates the stained glass effect and makes the colors stand out beautifully.

Prepare the following fabric sizes:

Colorful fabric scraps: 18–22 colors

Black fabric: for background, borders, and binding

Backing fabric: **100 cm x 125 cm**

Batting: **100 cm x 125 cm**

Binding strips: **6.5 cm wide**

Tools needed:

Sewing machine

Rotary cutter and cutting mat

Acrylic ruler

Fabric scissors

Pins or clips

Iron and ironing board

Pencil

Glue stick

Foundation paper

Printer paper for the pattern

Step 1: Prepare the Pattern

Print the full-size **Stained Glass Cross Quilt pattern**. The final cross should measure approximately **63 cm wide x 88 cm high**.

The pattern is divided into several numbered sections. Each section represents one stained glass piece.

Before cutting any fabric, study the pattern carefully. Check how the cross is divided into rows and sections so you understand how everything will fit together.

Use a pencil to number your pattern pieces clearly. This will help you stay organized during sewing.

<https://creative.craftsforlove.com/> - **SEE THE BEST PATTERNS**

Step 2: Choose and Cut the Fabrics

Select one colorful fabric for each section of the cross. Use a variety of colors to create a true stained glass look.

Cut each fabric piece at least **2.5 cm larger** than its paper section on all sides. This extra space is very important for seam allowance and trimming.

Try not to place the same color too close together. Spread the colors across the design to create balance.

A good color mix includes:

Bright blue

Dark blue

Red

Orange

Yellow

Green

Purple

Pink

Turquoise

Lime green

Magenta

Gold

Step 3: Sew on Paper Using FPP

Place the first fabric piece right side up on the back of the paper pattern.

Place the next fabric piece right sides together with the first piece. Sew directly on the printed line of the paper.

Use an accurate **1/4 inch seam allowance** throughout the project.

After sewing, fold the second fabric open and press it flat. You can use a dry iron or finger pressing.

Continue adding each fabric piece in numerical order until the entire section is complete.

<https://creative.craftsforlove.com/> - **SEE THE BEST PATTERNS**

Step 4: Complete All Pattern Sections

Repeat the same Foundation Paper Piecing process for all numbered sections.

Each finished section will look like a small stained glass block.

Keep the sections organized in the same order as the pattern layout. This makes assembly much easier later.

Press each section carefully after sewing. Avoid stretching the fabric.

Step 5: Remove the Paper

After all sections are sewn, gently remove the foundation paper from the back.

Tear or trim away the paper carefully so you do not pull or stretch the seams.

Small tweezers can help remove tiny paper pieces from the corners.

Take your time during this step because neat seams will help the quilt lie flat.

Step 6: Assemble the Cross Rows

Lay all finished sections on a table or design wall.

Arrange them exactly like the cross diagram.

Sew the sections together into rows first.

Use pins or clips to keep the seams aligned.

Press the seams flat after each row is sewn.

Step 7: Join the Rows

Once the rows are complete, sew the rows together to form the full cross.

Match the seams carefully so the stained glass lines look clean and connected.

Press the entire cross gently from the back.

At this stage, your colorful stained glass cross should be fully assembled.

<https://creative.craftsforlove.com/> - **SEE THE BEST PATTERNS**

Step 8: Add the Black Background

Cut black fabric panels to fill the background around the cross.

Sew the black fabric around the cross, creating a strong contrast between the colorful center and the background.

Add a black border around the quilt. The recommended border width is **6 cm on all sides**.

Press the seams carefully so the quilt top stays flat.

Step 9: Prepare the Quilt Sandwich

Place the backing fabric wrong side up.

Add the batting on top of the backing.

Place the quilt top right side up over the batting.

This creates the quilt sandwich:

Backing
Batting
Quilt top

Baste all layers together using pins, clips, or temporary basting spray.

Step 10: Quilt the Layers

Quilt along the black seams using the **stitch-in-the-ditch** method.

You can also add echo quilting about **1–2 cm inside the black lines**.

For extra texture, you may use pebble quilting or free-motion quilting in the background.

Keep the quilting gentle so the stained glass design remains the main focus.

<https://creative.craftsforlove.com/> - SEE THE BEST PATTERNS

Step 11: Trim the Quilt

After quilting, trim the excess batting and backing fabric.

Make sure the edges are straight and even.

Use a ruler and rotary cutter for the cleanest finish.

Check all sides before cutting to avoid trimming too much.

Step 12: Add the Binding

Cut binding strips **6.5 cm wide**.

Join the strips together to create one long binding strip.

Fold the binding in half lengthwise and press.

Sew the binding around the front edge of the quilt.

Fold it to the back and stitch it down by hand or machine.

Step 13: Final Press

Press the finished quilt gently.

Set the stitches and smooth the fabric.

Do not press too hard, especially over thick seams.

Your **Stained Glass Cross Quilt** should now have a clean, polished finish.

Step 14: Enjoy Your Handmade Quilt

Your **Stained Glass Cross Quilt** is complete!

You can use it as a wall hanging, a devotional decoration, a handmade gift, or a special seasonal quilt.

The bright colors, black outlines, and cross shape create a beautiful stained glass effect.

Enjoy your handmade masterpiece and keep creating!